



MANDATORY

ECLIPSE
AEROSPACE

SERVICE BULLETIN

NUMBER: SB 500-21-001, REV B
MODEL: ECLIPSE EA500
SUBJECT: OUTFLOW VALVE STATIC LINE SECURITY

1. PLANNING INFORMATION

A. Effectivity

Aircraft Serial Numbers 000001-000291.

B. Reason

To prevent the outflow valve static tubes from contacting the flight control cables.

Revision B updates Labor Requirements, adds rework option, removes seats to gain access and changes classification from Required to Mandatory.

C. Description

This Service Bulletin either replaces or reworks the Secondary Static Tube with a shorter tube and installs tie wraps to secure the outflow valve static tubes to prevent possible chaffing from the flight control cables.

D. Relevant Publications

None

E. Compliance

Eclipse Aerospace Inc. considers this to be an required modification that must be accomplished at the next maintenance visit, but no later than the 300 hour / 24 Month Inspection.

Compliance with revision A constitutes compliance with revision B.

F. Approval

This Service Bulletin is based on engineering data that is FAA-approved, and the modification herein complies with the applicable regulations.

G. Labor Requirements

The following information is for planning purposes only.

(1) Estimated labor hours to perform:

Suggested number of personnel: 1

Seat Removal: 0.25 Hours per seat x 2 seats = 0.5 Hours

Baggage Floor Panel Removal: 0.25 Hours

Secondary Static Tube Replacement: 0.25 Hours

Secondary Static Tube Rework: 0.5 Hours

Tie Strap Installation: 0.25 Hours

Baggage Floor Panel Installation: 0.25 Hours

Tube Replacement Total labor hours: 1.5 Hours

Tube Rework Total labor hours: 1.75 Hours

The above is an estimate based on properly equipped and experienced personnel complying with this Service Bulletin. Actual labor hours may vary depending on workforce experience, concurrent maintenance, discovery of other discrepancies, etc.



SERVICE BULLETIN

- (2) Qualification of personnel:
 - A person properly authorized under 14 CFR 43 to perform aircraft maintenance.

H. Weight and Balance Change

None

I. Electrical Load Data Change

None

J. Software Accomplishment Summary

None

K. References

Eclipse Drawing 21-104603-1006 - Cabin Pressurization Installation - Cabin.
Aircraft Maintenance Manual (AMM) P/N 06-117751, latest revision.

L. Publications Affected

None

2. MATERIAL INFORMATION

A. Materials

Order Non-Kitted Parts below.

- (1) Non-Kitted Parts

NOTE: For tube replacement only. Do not order if reworking the Static Tube Assembly.

Part Number	Description	Qty.	Unit of Issue
21-104616-1003	Static Tube Assembly	1	EA.

B. Consumables

The following consumables are required for this Service Bulletin.

Material	Specification	Use
Strap, Tie Down	MS3367-4-0	To secure static tubes from contacting flight control cables.

C. Interchangeability/Intermixability of Parts

None

D. Part Re-identification

None.

3. ACCOMPLISHMENT INSTRUCTIONS

A. Procedure

NOTE: The Secondary Static Tube Assembly can be reworked or replaced. Procedures are given for both.

- (1) Make aircraft safe for maintenance. Refer to AMM 20-00-01 - MAKE SAFE FOR MAINTENANCE.

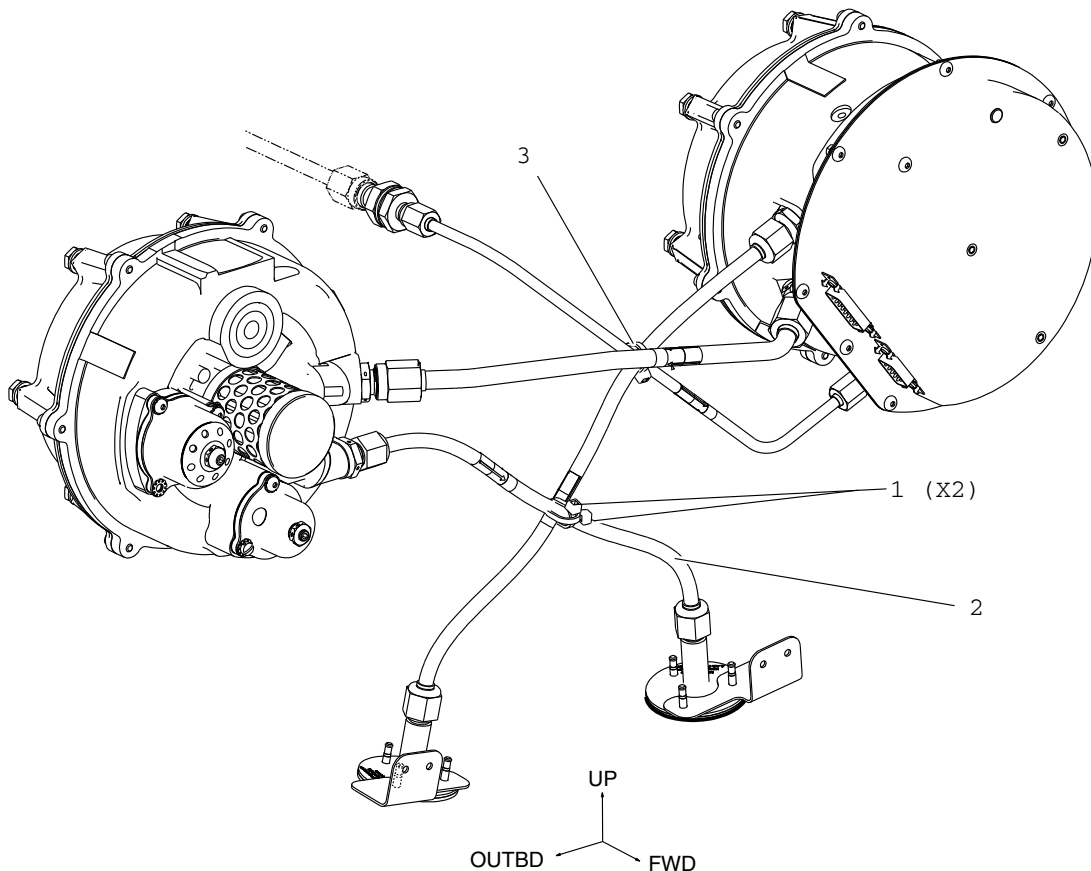


MANDATORY

ECLIPSE
AEROSPACE

SERVICE BULLETIN

- (2) Remove passenger seats as required to gain access. Refer to AMM 25-21-10 - PASSENGER SEAT REMOVAL.
- (3) Remove 231 NZ - Floor Panel, Baggage Compartment. Refer to AMM 25-21-30 - CABIN FLOOR PANELS - REMOVAL.
- (4) Replace Secondary Static Tube Assembly as follows:
 - (a) Remove Secondary Static Tube Assembly P/N 21-104616-1002 (2, Figure 1).



5080974A

Outflow Valve Static Tubes
Figure 1

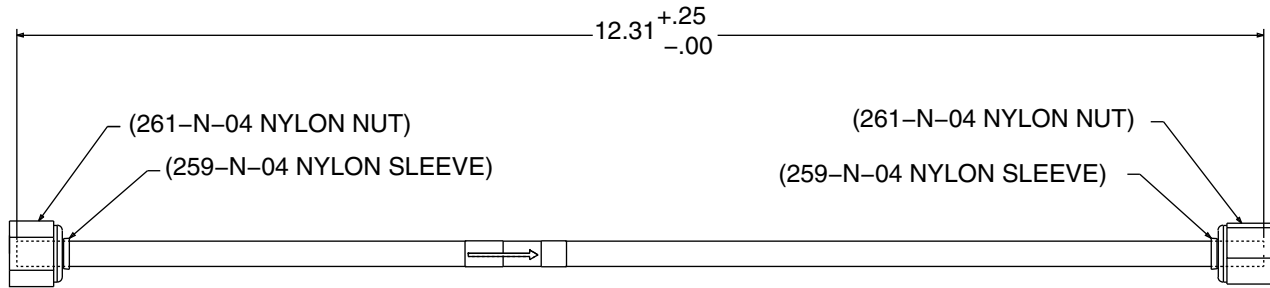
- (b) Install Secondary Static Tube Assembly P/N 21-104616-1003(2, Figure 1). Tighten Nylon Nuts 2 to 2.5 turns total engagement.
- (5) Remove Secondary Static Tube Assembly P/N 21-104616-1002 (2, Figure 1) and rework as follows:
 - (a) Cut Secondary Static Tube Assembly P/N 21-104616-1002 with Tubing Cutter to new length. Refer to (New Length , Figure 2).



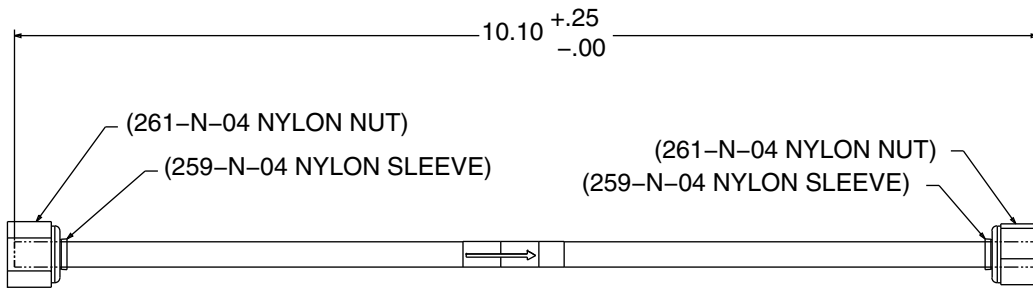
MANDATORY

**ECLIPSE
AEROSPACE**

SERVICE BULLETIN



**OLD LENGTH
P/N 21-104616-1002**

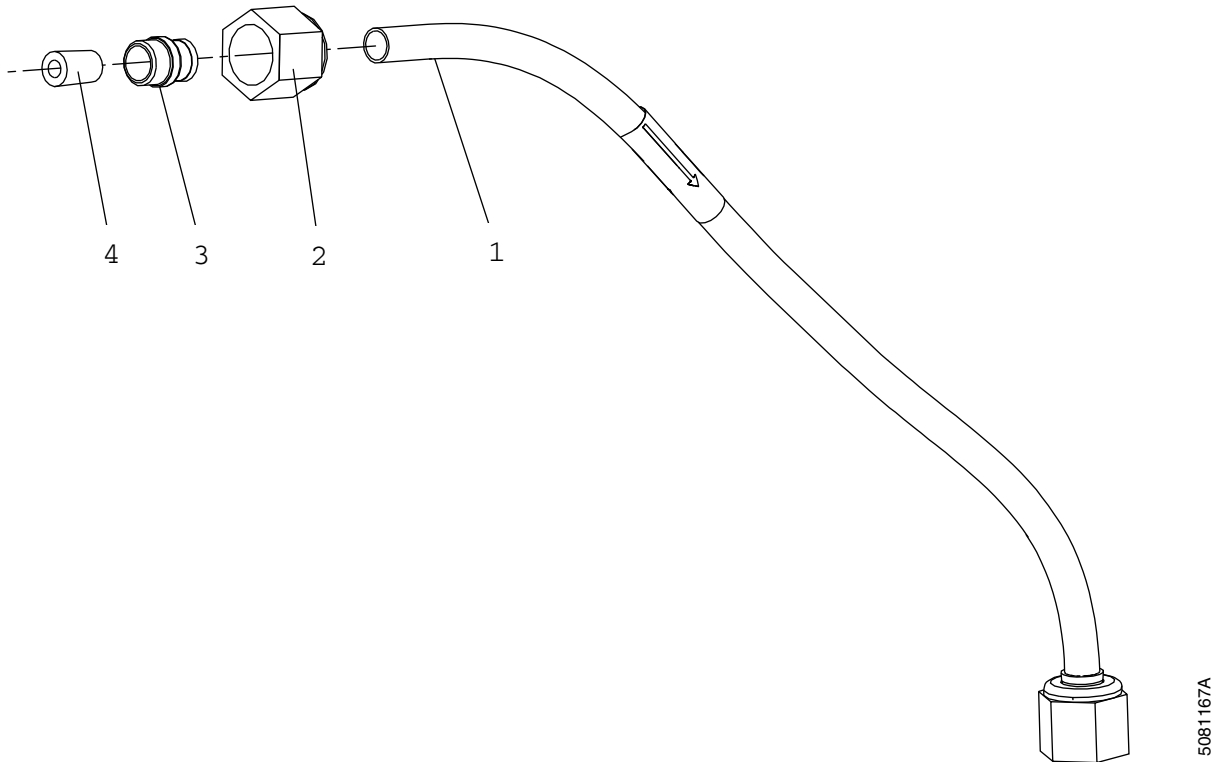


**NEW LENGTH
P/N 21-104616-1003**

Secondary Static Tube Rework Figure 2

- (b) Slide Nylon Nut P/N 261-N-04 (2, Figure 3) onto Static Tube Assembly (1, Figure 3). Slide Nylon Sleeve P/N 259-N-04 (3, Figure 3) on to end of the tube (1, Figure 3). Insert Ferrel (4, Figure 3) into end of tube.

5081166A

**SERVICE BULLETIN**

Nylon Nut and Sleeve Installation
Figure 3

- (c) Reidentify Secondary Static Tube Assembly (1, Figure 3) with permanent ink marker "21-104616-1003".
- (d) Install reworked Secondary Static Tube Assembly (2, Figure 1). Tighten Nylon Nuts 2 to 2.5 turns total engagement
- (6) Install two tie straps (lower tie straps) (1, Figure 1) vertically and laterally to primary and secondary static tubes as low as possible without kinking tubes. Maintain 0.5 inch minimum clearance from the flight control cables.
- (7) Install upper tie strap vertically and laterally (3, Figure 1) to primary static and bulkhead to primary tubes as high as possible. Maintain 0.5 inch minimum clearance from the flight control cables.
- (8) Install 231 NZ - Floor Panel, Baggage Compartment. Refer to AMM 25-21-30 - CABIN FLOOR PANELS - INSTALLATION.
- (9) Install passenger seats as required. Refer to AMM 25-21-10 - PASSENGER SEAT INSTALLATION.
- (10) If all other maintenance is complete, return aircraft to service. Refer to AMM 20-00-02 - RETURN TO SERVICE (AFTER MAINTENANCE).



MANDATORY

ECLIPSE
AEROSPACE

SERVICE BULLETIN

B. Limitations and Procedures

None

C. Cost

Contact Eclipse Aerospace Customer Care for information and availability.

4. RECORD OF COMPLIANCE

Upon completion of this Service Bulletin, make an appropriate maintenance-record entry specifying the Service Bulletin number.

5. NOTIFYING ECLIPSE AEROSPACE

On completing this service bulletin, the operator/maintainer shall complete the attached Compliance Record and send it to Eclipse Aerospace via regular mail, fax, or e-mail.

MAILING ADDRESS	Eclipse Aerospace Inc. ATTN: Customer Care 2503 Clark Carr Loop SE Albuquerque, NM 87106
Fax	1-505-241-8802
E-mail	customercare@EclipseAerospace.net

